



WORLD ARCHITECTURE NEWS



Click image to expand

Gavin Stewart

Squire & Partners

Landmark launches with Squire & Partners' first Manchester built project

Andrew McCorkell

30 Jul 2020

Squire & Partners has completed Landmark, a new Grade A office development adjacent to No1 St Peter's Square in Manchester

The project represents client Barings' first new build development in the UK and extends the cluster of prime office buildings in the city's new Civic Quarter.

Landmark provides 180,000 square feet of office space over 14 floors, with full height glazing on all elevations and outdoor terraces at upper levels contribute to occupier wellbeing and productivity while offering views of the city.

The precast stone and glass facade respond to the surrounding context of Manchester's famous St Peter's Square, expressed with a colonnaded base repeated at upper levels and unified by a grid to establish a sense of rhythm.

Vertical panels, spandrels and cills across the external envelope create depth and interest.

A double-height entrance activates the ground level and creates a strong presence on Manchester's Oxford Street.

Design of the reception interior references a 1930s cinema previously on the site with a pleated fabric curtain, dramatically suspended lighting, a bespoke rug, soft low seating and a patterned metal screen echoing Art Deco motifs.

At street level, a separate unit can be used as a secondary reception, studio, cafe or gym for the local business community.

Flexibility, tech infrastructure and digital connectivity are in-built with WiredScore Platinum certification and floorplates able to configure for one or two tenants per floor, accommodate additional plant and create connections between levels.

Occupiers benefit from innovative technology such as a dedicated building app, personalised access controls.

Amazon lockers and cycle repair station.

Secure car, motorbike and cycle spaces with showers and lockers are provided, as well as six passenger lifts with personalised destination control to maximise efficiency.

Electric car charging points are located on-site.

Landmark is rated EPC A and BREEAM Excellent, with 90 photovoltaic panels, in-built recycling management and habitats for local wildlife.

Externally the public realm has been enhanced with new Yorkstone paving, a colonnaded walkway and added trees and greenery.

The development has been awarded the 2019 Regional Chair's Award for Constructability at the Institute of Civil Engineers and was shortlisted for an RICS Social Impact Award.

Landmark expands southwards Manchester City Council's regeneration of St Peter's Square, aimed at creating one of Europe's finest Civic Quarters with high-quality buildings, transport infrastructure, open spaces and public amenities.

Key Facts

Brand:

Architecture

Practice:

Squire & Partners

Project Category:

Commercial

Offices

Corporate Offices

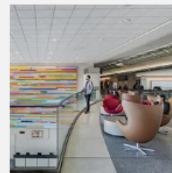
Corporate offices (less than 10,000 sqm)

Location:

United Kingdom

Project News

Woods Bagot improves passenger experience at San Francisco International Airport



31 July 20

Improvements include two food courts and the creat...

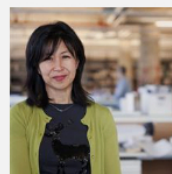
Concrete turns into 'corduroy' as French architect makes debut US project



31 July 20

More than 70 slabs of concrete-clad the facade of ...

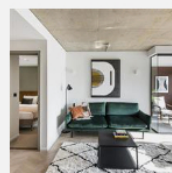
WRNS Studio Partner Pauline Souza elevated to AIA College of Fellows in 2020



31 July 20

The College of Fellows honors members who have mad...

St George's Gardens gains rooftop yoga, bar and outdoor cinema



30 July 20

Unique roof garden for Manchester development

New images reveal stunning £60m Hove housing development



30 July 20



Fresh details of a landmark
development of 148 fla...

[VIEW ALL](#)

Want to submit **your** project to
World Architecture News?

[CONTACT THE TEAM](#)

Text size [A](#) [A](#) [A](#)

Useful links

[Bulletins](#)
[Advertise](#)
[About us](#)
[Contact us](#)
[FAQ](#)
[Accessibility](#)

Terms of Use

[Terms & Conditions](#)
[Privacy Notice](#)
[Cookie Notice](#)
[Editorial Complaints](#)

WAN Network

[WAN Awards](#)
[WIN Awards](#)

haymarket © Haymarket Media Group Ltd. | [Terms & Conditions](#) | [Cookie Notice](#) | [Privacy Notice](#)

